

تم تحميل هذا الملف من موقع المناهج الإماراتية



حل أسئلة الامتحان النهائي القسم الإلكتروني منهج بريدج

موقع المناهج ← المناهج الإماراتية ← الصف العاشر العام ← علوم ← الفصل الأول ← حلول ← الملف

تاريخ إضافة الملف على موقع المناهج: 2024-11-12 15:58:08

ملفات اكتب للمعلم اكتب للطالب | اختبارات الكترونية | اختبارات | حلول | عروض بوربوينت | أوراق عمل
منهج انجليزي | ملخصات وتقارير | مذكرات وبنوك | الامتحان النهائي للمدرس

المزيد من مادة
علوم:

التواصل الاجتماعي بحسب الصف العاشر العام



الرياضيات



اللغة الانجليزية



اللغة العربية



التربية الاسلامية



المواد على تلغرام

صفحة المناهج
الإماراتية على
فيسبوك

المزيد من الملفات بحسب الصف العاشر العام والمادة علوم في الفصل الأول

حل تجميعية أسئلة مراجعة وفق الهيكل الوزاري منهج بريدج

1

تجميعية أسئلة مراجعة وفق الهيكل الوزاري منهج بريدج

2

مراجعة حل أسئلة امتحانات سابقة وفق الهيكل الوزاري

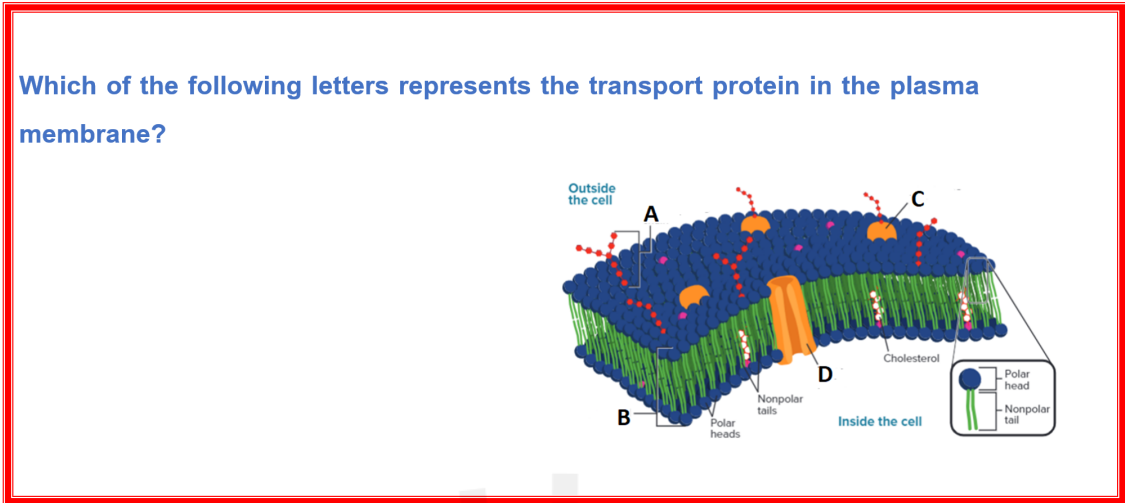
3

حل مراجعة اختيار من متعدد منهج بريدج

4

الهيكل الوزاري الجديد المسار العام منهج بريدج

5



Learning Outcomes Covered

- BIO.3.1.01.054

a.

A

b.

B

c.

C

d.

D

Based on the corresponding image, which of the following is a property of water that allows insects to rest on the surface of water?

**Learning Outcomes Covered**

- BIO.3.1.01.071
- BIO.3.1.01.083

a.

It is a good solvent.

b.

It combusts.

c.

It is cohesive.

d.

It is adhesive.

Which statement is true of chemical equations?

Learning Outcomes Covered

- BIO.3.1.01.083

a.

Reactants come after the arrow, and products come before.

b.

Reactants and products come before the arrow.

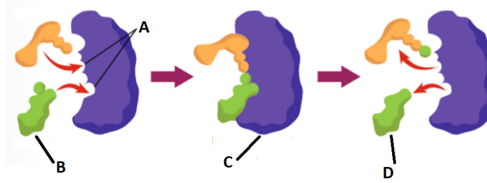
c.

Reactants come before the arrow, and products come after.

d.

Reactants and products both come after the arrow.

The figure below represents the enzyme action. Which of the following letters represents the product?



Learning Outcomes Covered

- BIO.3.1.01.083

a.

A

b.

B

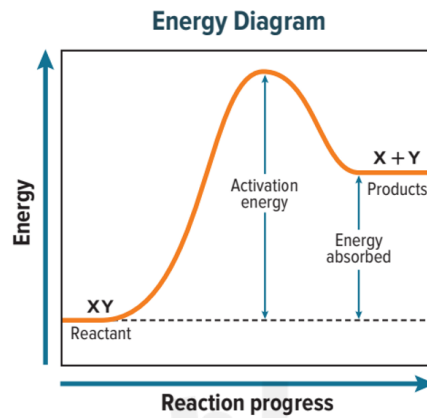
c.

C

d.

D

Which statement is true regarding this energy diagram?



Learning Outcomes Covered

- BIO.3.1.01.083

a.

Endothermic; that way the reaction will release heat.

b.

Endothermic; that way the reaction will absorb heat.

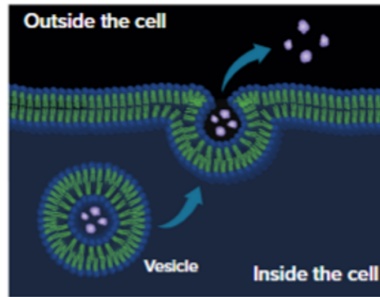
c.

Exothermic; that way the reaction will release heat.

d.

Exothermic; that way the reaction will absorb heat.

Which method of cellular transport can you see in the picture below?



Learning Outcomes Covered

- BIO.3.1.01.054

a.

Facilitative Diffusion

b.

Osmosis

c.

Exocytosis

d.

Endocytosis

..... Andhave a pH value of 3.

Learning Outcomes Covered

- o BIO.3.1.01.080

a.

Water

0%

b.

Soapy water

0%

c.

Blood

0%

d.

Orange juice

50%

e.

Cola

50%

The movement of substances across the plasma membrane against a concentration gradient and requires energy is called.....

Learning Outcomes Covered

- o BIO.3.1.01.054

a.

Osmosis

b.

Diffusion

c.

Passive transport

d.

Active transport

Which of the following best defines a cell?

Learning Outcomes Covered

- BIO.3.1.01.075

a.

Protein molecules in animals

b.

It contains different tissues

c.

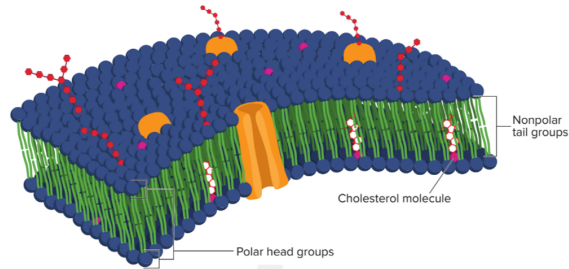
Structure that has no generic material

d.

The basic unit of living things

Which macromolecule is responsible for the formation of the plasma membrane bilayer?

Use the figure below to answer.



Learning Outcomes Covered

- BIO.3.1.01.054

a.

Lipids

b.

Carbohydrates

c.

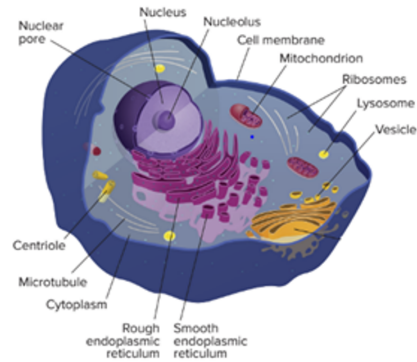
Nucleic acids

d.

Proteins

Which organelle is producing energy in the cell?

Use the figure below to answer.



Learning Outcomes Covered

- BIO.3.1.01.073

a.

Ribosome

b.

Mitochondria

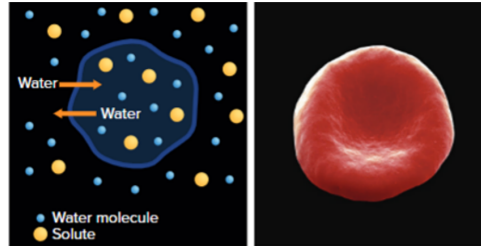
c.

Nucleus

d.

Vesicle

The figure below shows a blood cell placed in a solution. Which of the following is the solution used?



Learning Outcomes Covered

- BIO.3.1.01.057

a.

Isotonic

b.

Hypotonic

c.

Hypertonic

d.

Osmosis

An active transport pump located in a cell's plasma membrane transports sodium and

Learning Outcomes Covered

- o BIO.3.1.01.054

a.

Water

b.

Potassium

c.

Oxygen

d.

Magnesium

Which of the following functions can be attributed to carbohydrates?

Learning Outcomes Covered

- BIO.3.1.01.067

a.

Speed reaction

0%

b.

Genetic information storage

0%

c.

Provide structural support

50%

d.

Store energy

50%

e.

Provide barriers

0%

Which organelle is responsible for photosynthesis in plant cells?

Learning Outcomes Covered

- BIO.3.1.01.073

a.

Vacuole

b.

Chloroplast

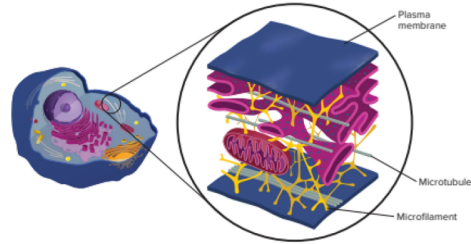
c.

Centriole

d.

Nucleolus

Which structure is made of protein fibers that form the cell's supporting network?
Use the figure below to answer.



Learning Outcomes Covered

- BIO.3.1.01.066

a.

Endoplasmic reticulum

b.

Cell wall

c.

Cytoskeleton

d.

Plasma membrane

A..... is a heterogeneous mixture in which the particles do not settle out, for example, the milk.

Learning Outcomes Covered

- o BIO.3.1.01.083

a.

Solution

b.

Suspension

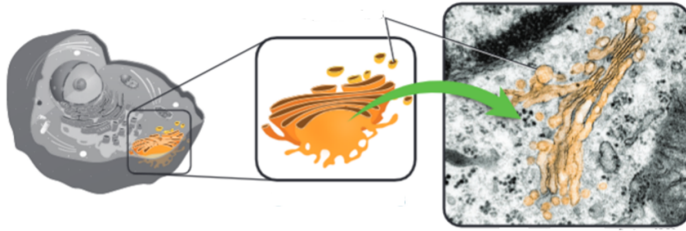
c.

Colloid

d.

Solute

The figure shows a cell structure that modifies, sorts, and packages proteins for distribution outside the cell, what is this structure called?



Learning Outcomes Covered

- BIO.3.1.01.073

a.

Vacuole

b.

Chloroplast

c.

Centriole

d.

Golgi apparatus

Which macromolecule stores genetic information for an organism?

Learning Outcomes Covered

- BIO.3.1.01.066

a.

Lipid

b.

Carbohydrate

c.

Nucleic acid

d.

Protein

Biology students in the class are observing prepared slides of the cells of lemon tree leaves and mammal skin cells. As they study the cells under the microscope's highest magnification, their teacher records their observations on the board. Which would be included in the teacher's list?

Learning Outcomes Covered

- BIO.3.1.01.069

a.

The leaf cells have green organelles called chloroplasts; the animal cells do not.

b.

The skin cells have a nucleus, but the cells of the leaves have no nucleus

c.

Both types of cells have a membrane that is also surrounded by a cell wall

d.

Both the animal and plant cells have an oval shape and are about the same size