

## شكراً لتحميلك هذا الملف من موقع المناهج الإماراتية



## نموذج امتحان تحريبي

موقع المناهج ← المناهج الإماراتية ← الصف التاسع المتقدم ← علوم ← الفصل الأول ← الملف

تاريخ نشر الملف على موقع المناهج: 2023-11-23 12:53:54

## التواصل الاجتماعي بحسب الصف التاسع المتقدم



## روابط مواد الصف التاسع المتقدم على تلغرام

[الرياضيات](#)

[اللغة الانجليزية](#)

[اللغة العربية](#)

[التربية الاسلامية](#)

## المزيد من الملفات بحسب الصف التاسع المتقدم والمادة علوم في الفصل الأول

[حل مراجعة شاملة وفق الهيكل الوزاري](#)

1

[المراجعة النهائية وفق الهيكل الوزاري](#)

2

[تجميع أسئلة باللغة العربية وفق الهيكل الوزاري](#)

3

[نموذج الهيكل الوزاري انسابير](#)

4

[نموذج الهيكل الوزاري بريدج](#)

5

How can enzymes benefit chemical reactions, as shown in this energy diagram?

**Energy Diagram**

Energy

X + Y

Activation energy

with enzyme

without enzyme

XY

Reaction progress

1. **A) lowering activation energy**

**B) raising activation energy**

**C) slowing reactions**

**D) increasing the amount of product**

Based on the diagram below, which number represents the energy released during the chemical reaction?

**Energy Diagram**

Energy

X + Y

2

3

XY

4

Reaction progress

2. **a. 1**

**b. 2**

**c. 3**

**d. 4**

3. Which of the following macromolecule is matched with its correct role in the cell?

- a. Nucleic acids-transport substances
  - b. Lipids-store genetic information
  - c. Proteins-speed reactions
  - d. Carbohydrates-make hormones
4. Which of the following functions are attributed to the carbohydrates
- a. Structural support
  - b. Signaling between cells
  - c. Energy storage
  - d. Genetic information storage
5. Which of the following is not the fundamental ideas of cell theory
- a. All cells contain specialized internal structures
  - b. Cells are the basic units of structure and organization of all living organisms
  - c. All living organisms are composed of one or more cells
  - d. Cells arise from preexisting ones.
- 6.
6. Which is not a part of the cell theory
- a. The basic unit of life is the cell.
  - b. Cells came from preexisting cells
  - c. All living organisms are composed of cells
  - d. Cells contain membrane bound organelles.

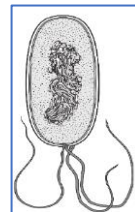
7.

**After studying plant tissues, animal tissues, and protozoans under the microscope, scientists summarized their observations of cells and formulated the cell theory.**

**Which would **not** be included as part of the cell theory?**

- a. Unicellular organisms grow from organic molecules.
  - b. Cells are building blocks
  - c. Parent cells pass genetic information to daughter cells
  - d. All living things are made of cells
8. What critical function does cholesterol serve in the body
- a. Destroys the plasma membrane
  - b. Binds fatty acid tails to water.
  - c. Disrupts homeostasis
  - d. Increases fluidity of plasma membrane.

9. \_\_\_\_\_ contains polar and non polar ends,forming the plasma membrane
- Microtubule
  - Transport protein
  - Cytoskeleton
  - Phospholipid bilayer
10. Where do you expect the location of water insoluble substances
- 1
  - 2
  - 3
  - 4
11. A molecule necessary for cell functioning cannot diffuse through the plasma membrane but needs a protein that can open and close to allow the molecule to diffuse . What is this protein called
- Carrier protein
  - Chanel protein
  - Receptor protein
  - Motor protein
12. Which of the following comparisons of animal and plant cells is not true
- Chloroplasts are found in pant cells but not in animal cells
  - Plant cells have a large vacuole while animal cells have few
  - Cellulose cell wall is found in plant cells but not in animal cells
  - Mitochondria are found in animal cells but not in plant cells
13. Identify the given organism



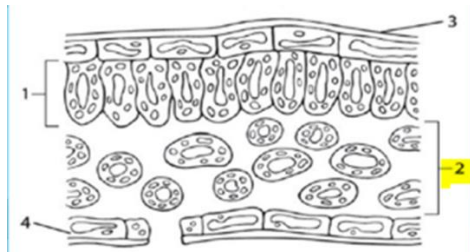
- This organism is eukaryotic, because it has multiple flagellum.
- This organism is prokaryotic, because it does not contain membrane-bound organelles.
- This organism is eukaryotic, because it has a cell membrane.

d. This organism is prokaryotic, because it has ribosomes.

14. An environmental toxin is discovered that interferes with certain cellular functions. When affected cells are examined, it is observed that proteins that are normally found on the plasma membrane are instead found in the cytoplasm. Other proteins are also located improperly. Which structure is most likely affected by the toxin?

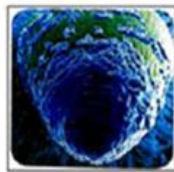
- A. lysosomes
- B mitochondria
- C cell wall
- D Golgi apparatus

15. Which of the following fills the spaces in spongy mesophyll cells

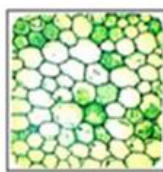


- a. Chlorophyll
- b. Gases
- c. Cells
- d. Vascular tissue

16. Which of the following shows stomata



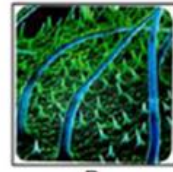
A



B



C



D

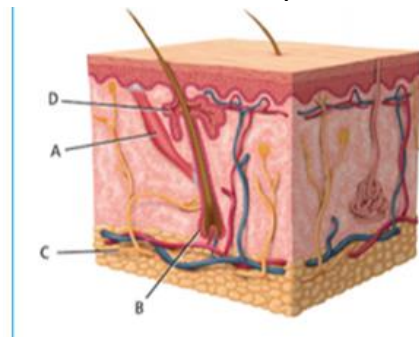
17. What is the type of stem shown in the picture below



- a. Runner
- b. Tuber

- c. Rhizome
- d. Bulb

18. Which tissue is responsible for goose bumps in the picture



- a. A
- b. B
- c. C
- d. D

19. What characteristic of the skin is important for bone formation?

- a. Sweat absorbs body heat when it evaporates and cools the skin.
- b. Vitamin D is made when skin is exposed to ultraviolet light.
- c. Nerve endings in the dermis protect from scrapes and breaks.
- d. Intact skin prevents the entry of many microorganisms and foreign substances.

20. Where is the location of Z line in the figure below.

