

تم تحميل هذا الملف من موقع المناهج الإماراتية



أسئلة الامتحان النهائي القسم الورقي منهج انسابير للعام 2023-2024

موقع المناهج ← المناهج الإماراتية ← الصف التاسع المتقدم ← علوم ← الفصل الأول ← ملفات متنوعة ← الملف

تاريخ إضافة الملف على موقع المناهج: 19:02:08 2024-12-11

ملفات اكتب للمعلم اكتب للطالب | اختبارات الكترونية | اختبارات | حلول | عروض بوربوينت | أوراق عمل
منهج انجليزي | ملخصات و تقارير | مذكرات و بنوك | الامتحان النهائي للمدرس

المزيد من مادة
علوم:

التواصل الاجتماعي بحسب الصف التاسع المتقدم



صفحة المناهج
الإماراتية على
فيسبوك

الرياضيات

اللغة الانجليزية

اللغة العربية

التربية الاسلامية

المواد على تلغرام

المزيد من الملفات بحسب الصف التاسع المتقدم والمادة علوم في الفصل الأول

حل نموذج اختبار تجريبي منهج انسابير

1

نموذج اختبار تجريبي منهج انسابير

2

مراجعة نهائية للمقرر وفق الهيكل الوزاري منهج بريدج

3

شرح درس أنواع التزاوج من وحدة علم الوراثة

4

حل الكراسة التدريبية للاختبار النهائي وفق الهيكل الوزاري

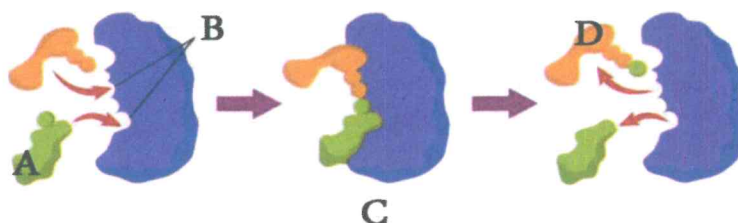
5

Circle the letter corresponding to the correct answer.

Question

1

The figure below represents the enzyme action. Which of the following letters indicates the product?



A

A

B

B

C

C

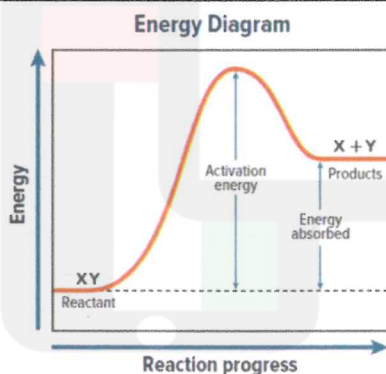
D

D

Question

2

Which statement is true regarding the energy diagram below?



A

It shows an endothermic reaction

B

It shows an exothermic reaction

C

Reactant and product energy are equal

D

Product energy is less than reactant energy



Question		3
Which of the following functions can be attributed to carbohydrates?		
A		Provide a barrier
B		Chemical signaling between cells
C		Store energy
D		Genetic information storage and transmission

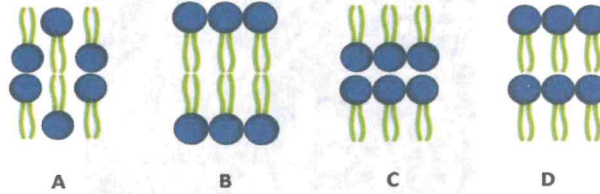
Question		4
Which of the following statements is a principle of cell theory?		
A		All cells contain membrane-bound genetic material
B		Cells are the basic unit of life
C		Tissue is the basic unit of life
D		All living organisms are composed of more than one cell



Question

5

Which of the following orientations of phospholipids best represents the phospholipid bilayer of the plasma membrane?

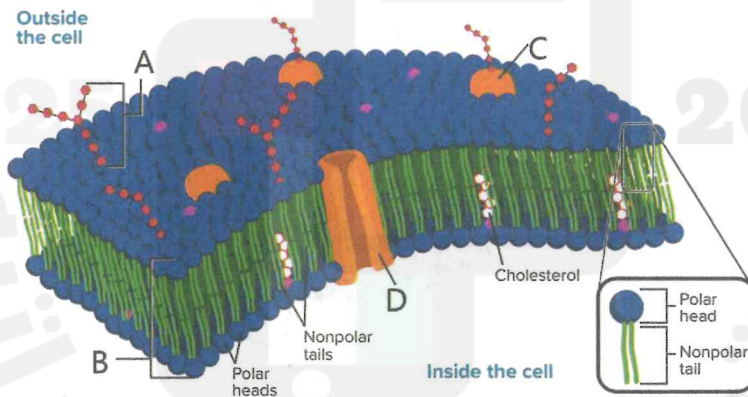


A		A
B		B
C		C
D		D

Question

6

Which of the following letters represents the transport protein in the plasma membrane?



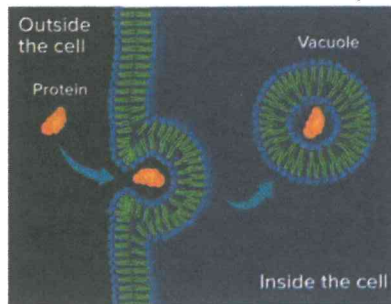
A		A
B		B
C		C
D		D



Question

7

Which method of cellular transport can you see in the picture below?



A

Endocytosis

B

Facilitative Diffusion

C

Osmosis

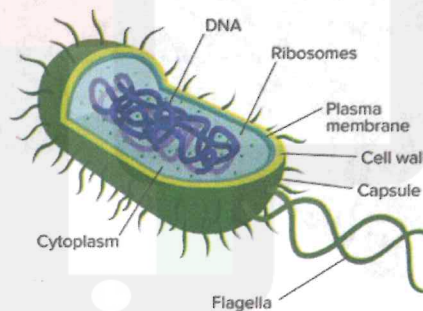
D

Exocytosis

Question

8

What kind of cell is shown in the picture below?



A

Blood Cell

B

Plant Cell

C

Prokaryotic Cell

D

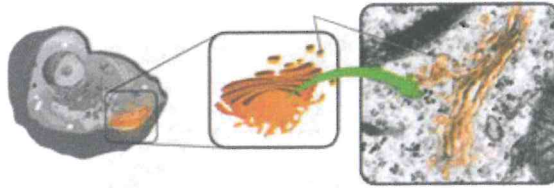
Animal Cell



Question

9

The figure shows a cell structure that modifies, sorts, and packages proteins for distribution outside the cell, what is this structure called?



A

Vacuole

B

Chloroplast

C

Centriole

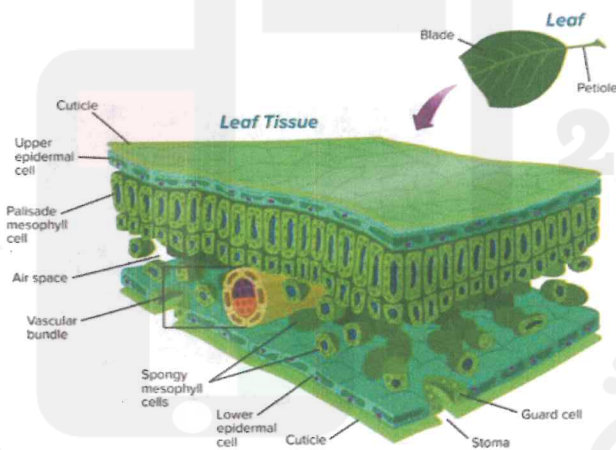
D

Golgi apparatus

Question

10

The figure below represents the leaf structure, where does most photosynthesis take place?



A

Cuticle

B

Palisade mesophyll cells

C

Stoma

D

Spongy mesophyll cells



Question

11

What type of tropism is shown in the picture below?



A

Phototropism

B

Thigmotropism

C

Positive gravitropism

D

Negative gravitropism

Question

12

What type of stem is shown in the picture below?



Crocus

A

Tuber

B

Rhizome

C

Runner

D

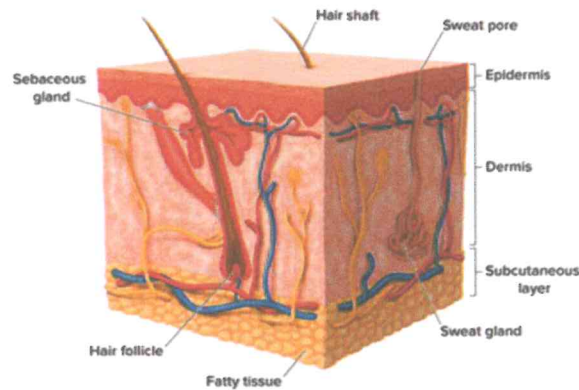
Corm



Question

13

The image below represents the skin layers. Which of the following contains the keratin layer?



A Epidermis

B Dermis

C Sweat gland

D Fatty tissue

Question

14

In the image below, what causes the cat's fur to stand on end (goose bumps)?



A Hair

B Bones

C Muscles

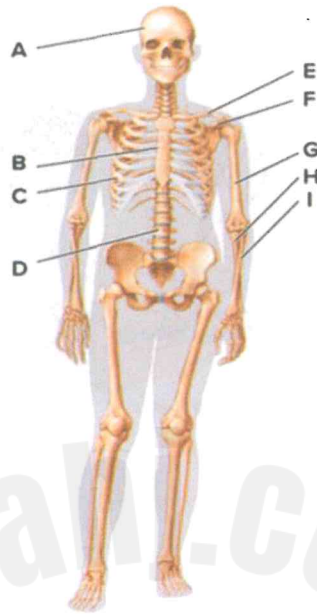
D Fatty tissue



Question

15

Which of the following letters represents the clavicle in the skeleton image below?



A		A
B		D
C		E
D		I

Question

16

Which type of transport requires energy input from the cell?

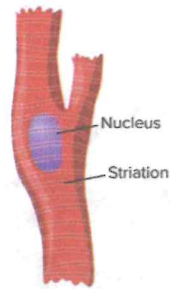
A		Osmosis
B		Endocytosis
C		Simple Diffusion
D		Facilitated Diffusion



Question

17

What kind of muscles are represented in the figure below?



A

Smooth Muscle

B

Cardiac Muscle

C

Skeletal Muscle

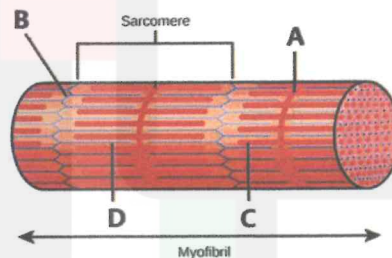
D

Voluntary Muscle

Question

18

The figure below represents the myofibril structure. Which of the following indicates the M line?



A

A

B

B

C

C

D

D

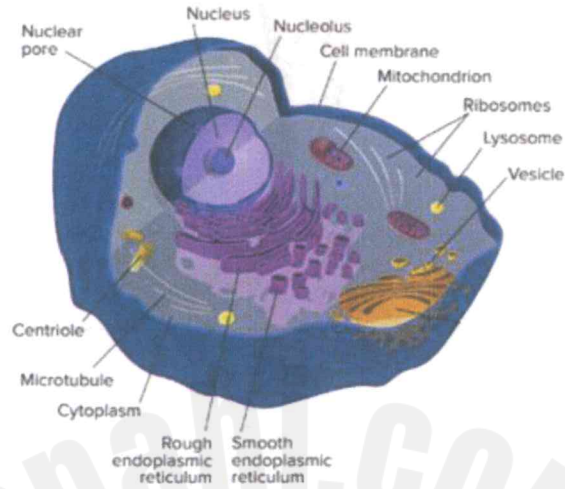


Question

19

Use the figure below to answer the question:

Which organelle manages the cell structures and contains most of the cell's DNA?



A

Ribosome

B

Mitochondria

C

Nucleus

D

Vesicle

Question

20

In which of the following structures would you expect to find a cell wall?

A

Leaf cells from a tree

B

Human muscle cells

C

Blood cells from a cow

D

Skin cells from a cat

End of Questions

انتهت الأسئلة

