

شكراً لتحميلك هذا الملف من موقع المناهج الإماراتية



أسئلة الامتحان النهائي - انسابير

[موقع المناهج](#) ⇨ [المناهج الإماراتية](#) ⇨ [الصف الرابع](#) ⇨ [علوم](#) ⇨ [الفصل الثاني](#) ⇨ [الملف](#)

تاريخ نشر الملف على موقع المناهج: 2023-03-26 00:00:00

التواصل الاجتماعي بحسب الصف الرابع



روابط مواد الصف الرابع على تلغرام

[الرياضيات](#)

[اللغة الانجليزية](#)

[اللغة العربية](#)

[التربية الاسلامية](#)

المزيد من الملفات بحسب الصف الرابع والمادة علوم في الفصل الثاني

[أسئلة الامتحان النهائي - انسابير](#)

1

[أسئلة الامتحان النهائي - بريدج](#)

2

[مراجعة مترجمة وفق الهيكل الوزاري - انسابير](#)

3

[حل أسئلة الامتحان النهائي - انسابير](#)

4

[حل نموذج أسئلة امتحان نهائي](#)

5

Circle the letter corresponding to the correct answer.

Part 1

Question

Which of the following best defines heat?

1

- A The movement of energy from a warmer object to a cooler object
- B Transfer of energy between two solid objects
- C Transfer of energy in moving gases or liquids
- D The energy that comes from a source in the form of waves or particles

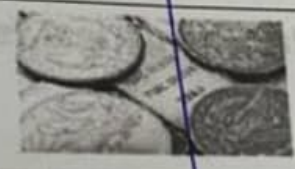
Question

2

Which of the following slows down or stops the flow of electrical current?



Copper



Silver



Gold



Wood

- A Copper
- B Silver
- C Gold
- D Wood



3

Question

Which of the following is considered a living natural resource?



Metal



Soil



Water



Plant

A	Plant
B	Metal
C	Soil
D	Water

4

Question

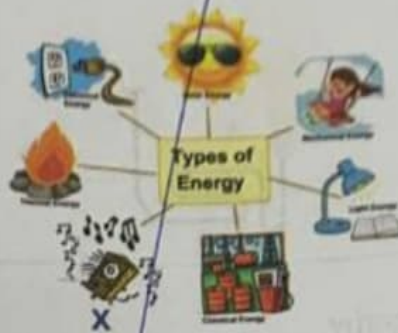
Which of the following is the source of solar energy that is used to produce electricity?

A	Sun
B	Air
C	Water
D	Wind

Question

5

The figure below shows the types of energy. Which type of energy does letter (X) refer to?



A

Sound energy

B

Wind energy

C

Geothermal energy

D

Nuclear energy

Question

6

Which of the following is a renewable resource of energy?

A

Wood

B

Oil

C

Natural gas

D

Coal



Part 2

Question

7

Which of the following best describes how does energy change in an electric bulb?



Chemical to thermal energy

Electrical to light energy

Electrical to chemical energy

Thermal to sound energy

Question

8

Which of the following is a fossil fuel?

The coal

The battery

The wood

The uranium



Question

9

Which of the following best describes using hot water that lies deep inside earth to generate electricity?

- A Light energy
- B Nuclear energy
- C Geothermal energy
- D Sound energy

Question

10

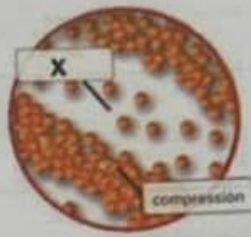
Which of the following causes air or water pollution?

- A Burning biofuels
- B Wind power
- C Hydroelectric energy
- D Solar energy

Question

11

Which part of the sound wave that has fewer particles is represented with the letter (X)?



A Rarefaction

B Peak

C Vibration

D Medium

Question

12

Based on the figure below, which of the following best describes how thermal energy is transferred?



- | | |
|---|-------------|
| A | Radiation |
| B | Convection |
| C | Conduction |
| D | Evaporation |

Question

13

Based on the figure below, which step represents changing chemical energy to thermal energy?



A

2

B

3

C

4

D

1

Question

14

Which of the following best describes the below electric circuit with a bulb lights up?



A

Closed

B

Broken

C

Parallel

D

Open



Question

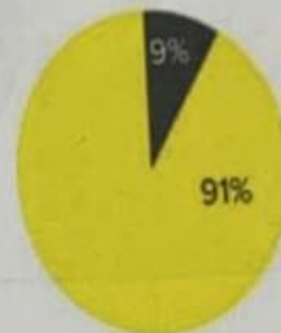
15

The figure below compares the percentages of heat and light energy produced from LED and incandescent light bulbs.

What is the percentage of the light that is produced from each of them?



Incandescent



LED

A	LED 91% and incandescent 2%
B	LED 9 % and incandescent 2%
C	LED 98% and incandescent 91%
D	LED 9% and incandescent 2%

Question

16

The figure below shows wind turbines. What kind of energy transformation does wind turbines do?



Wind turbines

A	Motion into electrical energy
B	Chemical energy into thermal energy
C	Thermal energy into mechanical energy
	Chemical energy into kinetic energy

Part 3

Question

17

Use the adjacent figure to answer the following questions.



A. The electrical energy from the laptop is transformed into:

-energy
-energy

B. While the teacher is talking to his student, he is transforming chemical energy from food into:

-energy

Question

18

A. Fill in the blanks in the adjacent table.

(1).....

(2).....

(3).....

Station	Energy Transfer or Transformation?	Types of Energy
Wind-up toy 1	potential to kinetic and sound
Pom-pom launcher	transformation	potential to kinetic
Dropped ball	transformation	back and forth from potential to 2
Marbles	transfer and transformation	kinetic to kinetic and 3

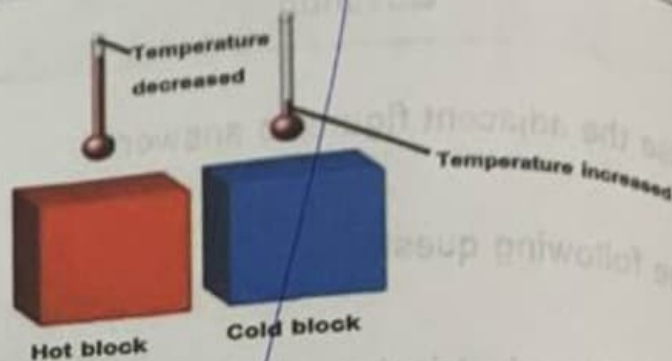
B. What kind of energy is produced from burning wood and digesting food

.....

Question

19

A. Explain why when the hot block is placed beside the cold block the temperature of the hot block decreased and the temperature of the cold block increased.



B. What will happen when the two blocks reach the same temperature?

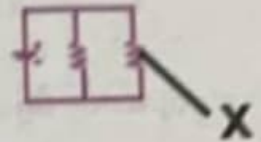


Question

20

The adjacent figure shows an electric circuit.

A. Label the letter (X).



B. Identify the type of the electric circuit.

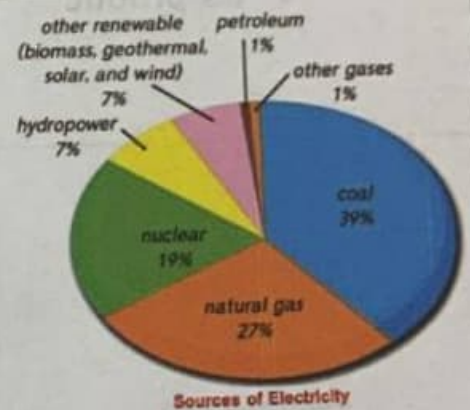
***** BONUS *****

Question

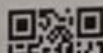
21

Use the adjacent figure to answer the below questions.

A. What is the total percentage of renewable resources that are used to generate electricity?



B. Which source is the highest source of electricity?



..... BONUS

Question

22

The adjacent figure shows the "three Rs" of conserving resources.

A. Label the letter (X).



B. Recycle is the process of converting waste materials into new products.

Give an example of a recycled material and its product.

- Recycled material
- its product

End of questions