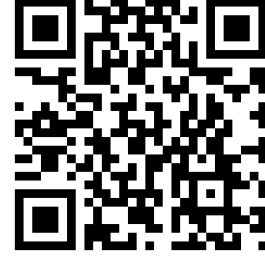


شكراً لتحميلك هذا الملف من موقع المناهج الإماراتية



أسئلة الامتحان النهائي الورقي انسابير

[موقع المناهج](#) ← [المناهج الإماراتية](#) ← [الصف الرابع](#) ← [علوم](#) ← [الفصل الثالث](#) ← [الملف](#)

التواصل الاجتماعي بحسب الصف الرابع



روابط مواد الصف الرابع على تلغرام

[الرياضيات](#)

[اللغة الانجليزية](#)

[اللغة العربية](#)

[التربية الاسلامية](#)

المزيد من الملفات بحسب الصف الرابع والمادة علوم في الفصل الثالث

أسئلة الامتحان النهائي الورقي انسابير	1
أسئلة الامتحان النهائي الورقي بريدج	2
تدريبات امتحانية وفق الهيكل الوزاري الجديد	3
مراجعة امتحانية ملخص وحلول وفق الهيكل الوزاري الجديد انسابير	4
حل أسئلة الامتحان النهائي التعويضي ماحروهيل	5

Circle the letter corresponding to the correct answer.

Part 1

Question

1

Which of the following plant's structures allows gases to move in and out of the plant?

<input checked="" type="radio"/> A	The stomata
<input type="radio"/> B	The roots
<input type="radio"/> C	The flowers
<input type="radio"/> D	The seeds

Question

2

The figure below shows a plant seed.

Which of the following is represented by the letter (X)?



<input type="radio"/> A	A fruit
<input type="radio"/> B	An embryo
<input checked="" type="radio"/> C	A cone
<input type="radio"/> D	A flower



Question

3

Which of the following is considered an **internal** structure for animals?

A	<input type="checkbox"/>	The ear
B	<input checked="" type="checkbox"/>	The stomach
C	<input type="checkbox"/>	The beak
D	<input type="checkbox"/>	The fur

Question

4

Which of the following best defines a period of inactivity during cold weather?



A	<input type="checkbox"/>	Mimicry
B	<input type="checkbox"/>	Migration
C	<input type="checkbox"/>	Camouflage
D	<input checked="" type="checkbox"/>	Hibernation



Part 2

Question

7

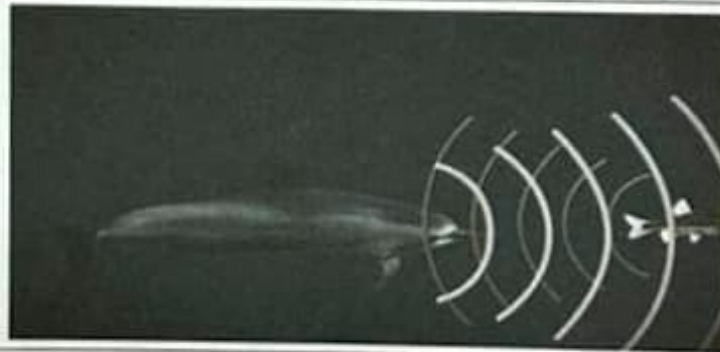
Most Prey's have eyes on theof their head.

A	top
B	sides
C	✓ front
D	back

Question

8

Which of the following best defines the process of finding an object by using reflected sound or echoes?



A	✓ Hearing
B	Vision
C	Smell
D	Echolocation



Question

9

Which of the following best defines the physical trait or behavior that helps an organism to survive?

A	Habitat
B	Adaptation
C	Response
D	Stimulus

Question

10

Which of the following body parts does a fish use to breathe?



A	Fines
B	Eyes
C	Lungs
D	Gills



Question

11

What does the female part of the plant produce for fertilization?

A Egg

B Pollen

C Powder

D Pistil

Question

12

What do butterflies use to taste leaves before laying their eggs?



A The feet

B The nose

C The antenna

D The wing



Question

13

Which of the following best defines the thing or event that causes a given response?

A Tropism

B Adaptation

C Habitat

D Stimulus

Question

موقع المناهج الإماراتية 14

What does the central nervous system consist of?

A Brain and spinal cord

B Brain only

C Spinal cord only

D Nerves

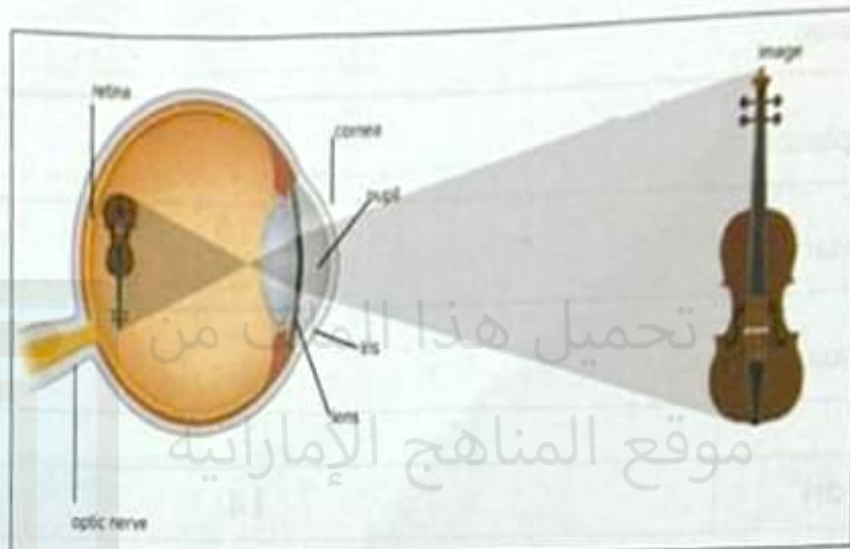


Question

15

The figure below shows the human eye.

Which of the following is the correct path that light passes through?



A	<input checked="" type="checkbox"/> Cornea → Pupil → Lens → Retina
B	<input type="checkbox"/> Pupil → Cornea → Lens → Retina
C	<input type="checkbox"/> Pupil → Cornea → Retina → Lens
D	<input type="checkbox"/> Cornea → Pupil → Retina → Lens



Question

16

The figure below shows a reflex action upon touching hot object.
Which of the following is controlling the reflex?



- | | | |
|---|-------------------------------------|-----------------|
| A | <input type="checkbox"/> | The spinal cord |
| B | <input checked="" type="checkbox"/> | The brain |
| C | <input type="checkbox"/> | The stomach |
| D | <input type="checkbox"/> | The kidneys |

تم تحميل هذا الملف من

موقع المناهج الإماراتية

alManahj.com/ae



Part 3

Question

17

The adjacent figure shows the sunflower plant parts.

- A. Which letter takes in water and dissolved nutrients from the soil?

minerals

- B. Label letter A.

Stems

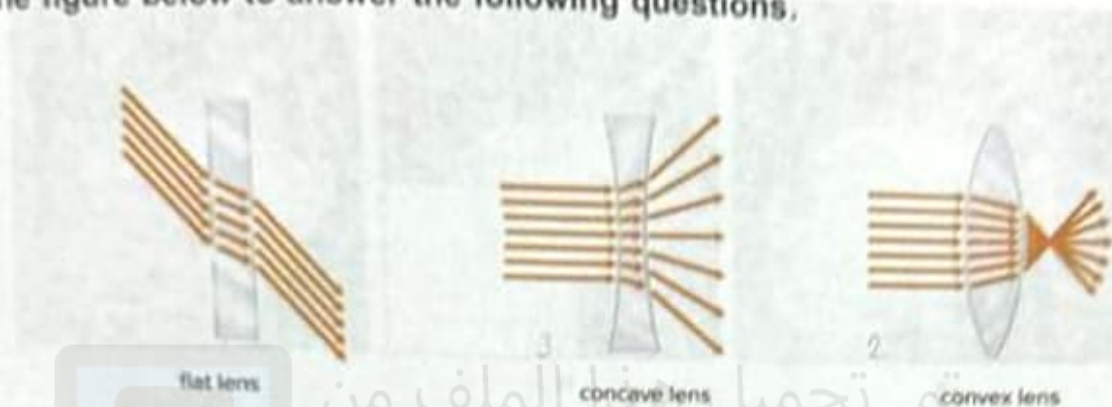
- C. The plant releases water vapor through the small openings in the underside of leaves.

This process is called.....stomata.....



***** BONUS *****

Use the figure below to answer the following questions.



A. Which lens makes the light's path shifts a little, but its final direction does not change?

flat lens

B. Which lens is used in eyeglasses for people who are nearsighted?

convex lens

C. Which lens is used in eyeglasses for people who are farsighted?

concave lens



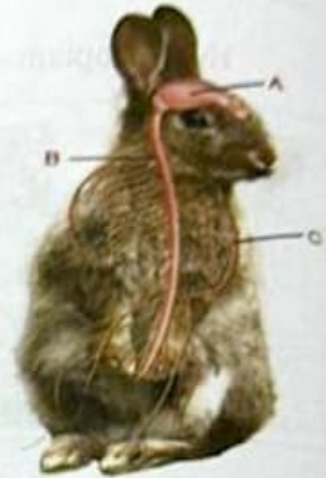
Question

20

The adjacent figure shows the nervous system of an animal.

1. Label the letters (A), (B) and (C).

- Letter (A) is brain.....
- Letter (B) is Spinal cord.....
- Letter (C) is nerves.....



2. Define the nerves that are not part of the central nervous system and receive sensory information from other parts of the body.

stomach.....

alManahj.com/ae



***** BONUS *****

The figure below shows three different materials that light passes through.



1. Which letter represents a material that let all the light through so objects on the other side can be seen clearly?

transparent

2. Which letter represents a material that let some light through so objects on the other side appear blurry? Give an example.

translucent

Example: paper

3. Which letter represents a material that completely blocks the light from passing through? Give an example.

opaque

Example: Door

End of questions

