

شكراً لتحميلك هذا الملف من موقع المناهج الإماراتية



أوراق عمل الوحدة الثامنة

[موقع المناهج](#) ⇨ [المناهج الإماراتية](#) ⇨ [الصف الخامس](#) ⇨ [رياضيات](#) ⇨ [الفصل الثاني](#) ⇨ [الملف](#)

تاريخ نشر الملف على موقع المناهج: 2024-01-26 12:21:21

التواصل الاجتماعي بحسب الصف الخامس



روابط مواد الصف الخامس على تلغرام

[الرياضيات](#)

[اللغة الانجليزية](#)

[اللغة العربية](#)

[التربية الاسلامية](#)

المزيد من الملفات بحسب الصف الخامس والمادة رياضيات في الفصل الثاني

[اختبار في وحدة التعابير والأنماط](#)

1

[أسئلة تدريبية اختبار القياس الدولي IBT](#)

2

[كتاب دليل المعلم](#)

3

[كتاب الطالب ريفيل](#)

4

[أسئلة الامتحان النهائي - بريدج](#)

5

Practice Questions - Term - 2 (Unit - 8)

1) Enter the answer.

Find the quotient.

$$41.6 \div 0.1 = \underline{\hspace{2cm}}$$

2) Enter the answer.

Find the quotient.

$$7.8 \div 0.01 = \underline{\hspace{2cm}}$$

3) Enter the answer.

Find the quotient.

$$30.4 \div 10 = \underline{\hspace{2cm}}$$

4) Enter the answer.

Find the quotient.

$$26.4 \div 0.01 = \underline{\hspace{2cm}}$$

5) Enter the answer.

Find the quotient.

$$4.8 \div 0.1 = \underline{\hspace{2cm}}$$

6) Choose the correct answer.

Arabella has \$13, all in dimes. How many dimes does she have?

- 13 dimes
- 130 dimes
- 1,300 dimes
- 13,000 dimes

Practice Questions - Term - 2 (Unit - 8)

7) Choose the correct answer.

Jorge has \$22.50, all in pennies. How many pennies does he have?

- 22 pennies
- 225 pennies
- 2,250 pennies
- 22,500 pennies

8) Choose the correct answer.

Henry walks to and from school each day. After 100 days of school, he has walked 125 miles. How many miles does Henry walk to and from school each day?

- 0.0125 miles
- 0.125 miles
- 1.25 miles
- 12.5 miles

9) Choose the correct answer.

What is the quotient of $31.28 \div 0.46$?

- 0.68
- 6.8
- 68
- 680

10) Choose the correct answer.

What is the quotient of $43.99 \div 8.3$?

- 0.53
- 5.3
- 53
- 530

11) Choose the correct answer.

Which of the following is the best estimate for the quotient of $65.2 \div 0.87$?

- 7
- 30
- 50
- 70

Practice Questions - Term - 2 (Unit - 8)

12) Choose the correct answer.

Harriet spends \$12.58 on some stickers. Each sticker costs \$0.06. About how many stickers did Harriet buy?

- about 20 stickers
- about 150 stickers
- about 200 stickers
- about 250 stickers

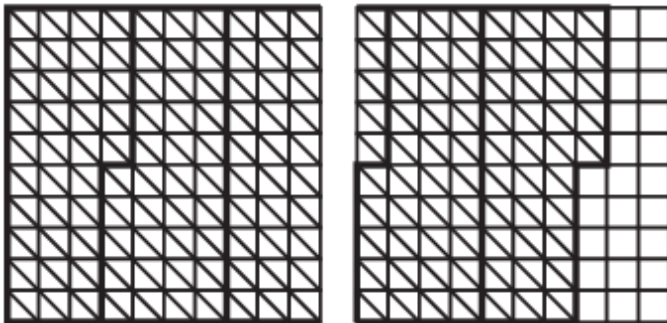
13) Choose the correct answer.

A bicycle race covers a distance of 64.5 kilometers. There are water stations every 7.6 kilometers. About how many water stations are there along the course?

- about 4 water stations
- about 8 water stations
- about 12 water stations
- about 18 water stations

14) Choose the correct answer.

Look at the decimal grids.



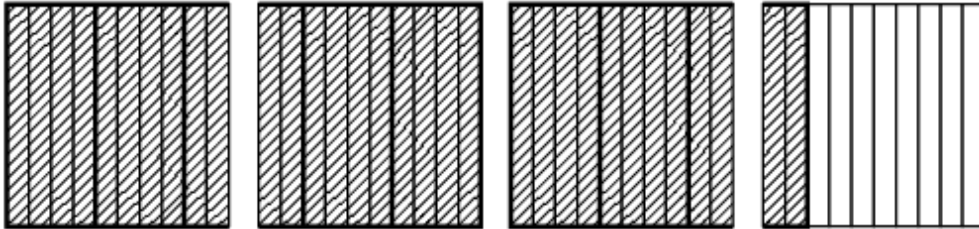
Which equation is shown by the decimal grids?

- $1.75 \div 5 = 0.25$
- $1.75 \div 5 = 0.35$
- $1.75 \div 5 = 25$
- $1.75 \div 5 = 35$

Practice Questions - Term - 2 (Unit - 8)

15) Choose the correct answer.

Look at the decimal grids.



Which equation is shown by the decimal grids?

- $3.2 \div 8 = 0.04$
- $3.2 \div 8 = 0.4$
- $3.2 \div 8 = 4$
- $3.2 \div 8 = 40$

16) Enter the answer.

What is the quotient?

$$4.2 \div 6 = \underline{\hspace{2cm}}$$

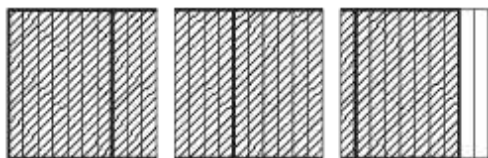
17) Enter the answer.

What is the quotient?

$$1.86 \div 3 = \underline{\hspace{2cm}}$$

18) Choose the correct answer.

Look at the decimal grids.



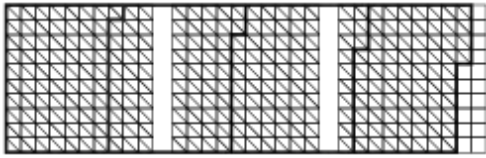
Which equation is represented by the decimal grids shown?

- $28 \div 0.7 = 40$
- $0.7 \div 2.8 = 4$
- $0.8 \div 4 = 0.7$
- $2.8 \div 4 = 0.7$

Practice Questions - Term - 2 (Unit - 8)

19) Choose the correct answer.

Brooklyn divides 2.84 kilograms of fruit salad equally among 4 serving bowls. She wants to know how many kilograms of fruit salad to put in each bowl. She uses the decimal grids shown. Look at the decimal grids.



What amount does each square in the grid represent?

- 1 kilogram
- 0.1 kilogram
- 0.01 kilogram
- 0.001 kilogram

20) Enter the answers.

How many grid squares are in each group?

_____ grid squares

How many kilograms of fruit salad are in each bowl?

_____ kilogram

21) Choose the correct answer.

Which is an equivalent representation of $3.5 \div 5$?

- 35 tens $\div 5$
- 35 ones $\div 5$
- 35 tenths $\div 5$
- 35 hundredths $\div 5$

22) Choose the correct answer.

Which is an equivalent representation of $2.16 \div 4$?

- 216 tens $\div 4$
- 216 ones $\div 4$
- 216 tenths $\div 4$
- 216 hundredths $\div 4$

Practice Questions - Term - 2 (Unit - 8)

23) Choose the correct answer.Which is an equivalent representation of $0.72 \div 4$?

- 72 tens $\div 4$
- 72 ones $\div 4$
- 72 tenths $\div 4$
- 72 hundredths $\div 4$

24) Choose the correct answer.Which is an equivalent representation of $5.6 \div 8$?

- 56 tens $\div 8$
- 56 ones $\div 8$
- 56 tenths $\div 8$
- 56 hundredths $\div 8$

25) Enter the answer.

What is the quotient?

$$5.6 \div 8 = \underline{\hspace{2cm}}$$

26) Choose the correct answer.Which division expression is equivalent to $4 \div 0.05$ with a whole number divisor?

- $4 \div 5$
- $400 \div 5$
- $400 \div 50$
- $4,000 \div 500$

27) Enter the answer.

What is the quotient?

$$4 \div 0.05 = \underline{\hspace{2cm}}$$

28) Enter the answer.

What is the quotient?

$$12 \div 0.4 = \underline{\hspace{2cm}}$$

Practice Questions - Term - 2 (Unit - 8)

29) Choose the correct answer.

Which division expression is equivalent to $10 \div 0.25$ with a whole number divisor?

- $100 \div 25$
- $1,000 \div 25$
- $1,000 \div 250$
- $10,000 \div 2,500$

30) Enter the answer.

What is the quotient?

$$10 \div 0.25 = \underline{\hspace{2cm}}$$

31) Enter the answer.

A ball of yarn contains 60 feet of yarn. Tina needs 1.2 feet of yarn to make a bow for a package. How many packages can Tina make a bow for with the yarn she has?

 packages

32) Choose the correct answer.

Which division expression is equivalent to $2.7 \div 0.9$ with a whole number divisor?

- $27 \div 9$
- $270 \div 9$
- $2,700 \div 90$
- $27,000 \div 900$

33) Enter the answer.

What is the quotient?

$$2.7 \div 0.9 = \underline{\hspace{2cm}}$$

34) Choose the correct answer.

Which division expression is equivalent to $3.2 \div 0.4$ with a whole number divisor?

- $32 \div 4$
- $320 \div 4$
- $3,200 \div 40$
- $32,000 \div 400$

Practice Questions - Term - 2 (Unit - 8)

35) Enter the answer.

What is the quotient?

$3.2 \div 0.4 = \underline{\hspace{2cm}}$

36) Choose the correct answer.Which division expression is equivalent to $24.94 \div 0.58$ with a whole number divisor?

- $249 \div 58$
 $2,494 \div 58$
 $2,494 \div 580$
 $24,940 \div 5,800$

37) Enter the answer.

What is the quotient?

$24.94 \div 0.58 = \underline{\hspace{2cm}}$

38) Enter the answer.

Dexter is designing a rectangular bedroom. The area of the bedroom is to be 137.5 square feet, and the length is to be 12.5 feet. What is the width of the bedroom?

 $\underline{\hspace{2cm}}$ feet**39)** Enter the answer.

Amelia has 0.96 pound of grated cheese. She uses 0.06 pound of cheese on each of her salads. How many salads can Amelia make?

 $\underline{\hspace{2cm}}$ salads**40)** Enter the answer.

A fence post is placed every 4.2 feet. How many fence posts are needed for a fence that is 176.4 feet long?

 $\underline{\hspace{2cm}}$ fence posts