

تم تحميل هذا الملف من موقع المناهج الإماراتية

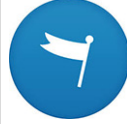


## حل أسئلة الامتحان النهائي القسم الالكتروني منهج انسابير

[موقع المناهج](#) ⇨ [المناهج الإماراتية](#) ⇨ [الصف السادس](#) ⇨ [علوم](#) ⇨ [الفصل الثالث](#) ⇨ [الملف](#)

تاريخ إضافة الملف على موقع المناهج: 15:21:40 2024-07-07

## التواصل الاجتماعي بحسب الصف السادس



اضغط هنا للحصول على جميع روابط "الصف السادس"

## روابط مواد الصف السادس على تلغرام

[الرياضيات](#)

[اللغة الانجليزية](#)

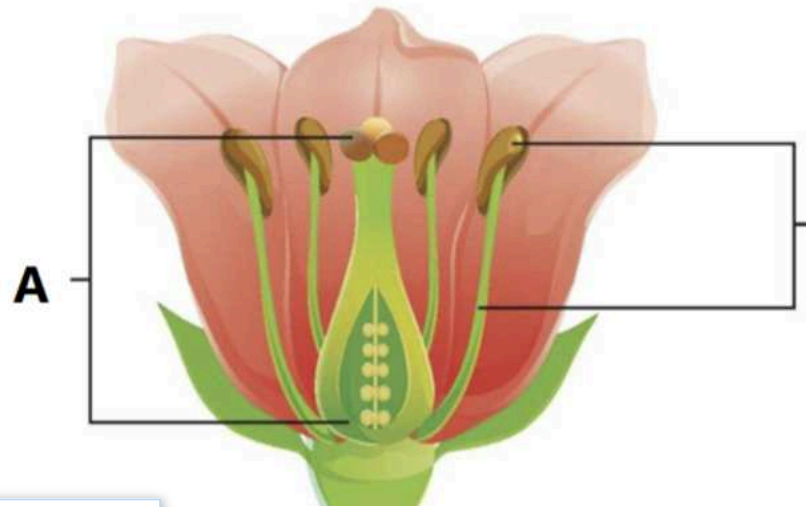
[اللغة العربية](#)

[التربية الاسلامية](#)

## المزيد من الملفات بحسب الصف السادس والمادة علوم في الفصل الثالث

<a href="#">حل أسئلة الامتحان النهائي القسم الالكتروني منهج بريدج</a>	1
<a href="#">دليل تصحيح أسئلة الامتحان النهائي القسم الورقي منهج بريدج</a>	2
<a href="#">حل أسئلة الامتحان النهائي القسم الورقي منهج انسابير</a>	3
<a href="#">أسئلة نموذج تدريبي امتحاني منهج انسابير</a>	4
<a href="#">مراجعة نهائية وفق الهيكل الوزاري منهج انسابير المسار المتقدم</a>	5

What does the letter **A** refer to in the image below?



**Learning Outcomes Covered**

- SCI.3.2.01.008

a.

Pistil

b.

Stamen

c.

Seed

d.

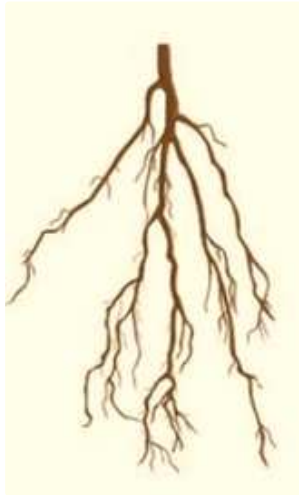
Spores

Which of the following is a plant structure that increases the probability of successful reproduction?

**Learning Outcomes Covered**

- SCI.3.1.01.022
- SCI.3.1.01.035

a.



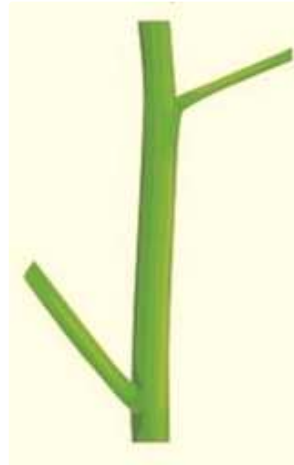
b.



c.



d.



Which of the following is **NOT** a courtship behavior?

Learning Outcomes Covered

- SCI.3.2.01.008

a.

Birds singing

b.

Fireflies lighting up

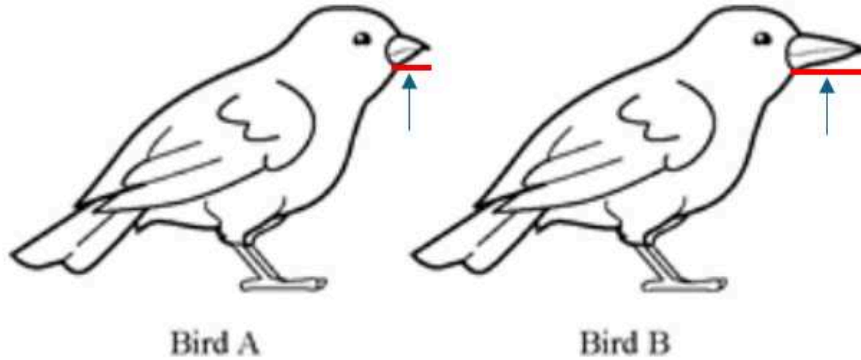
c.

Frogs croaking

d.

Dogs digging

Bird **A** has the genotype  $ll$  for beak length, and Bird **B** is  $LL$ .  
What would the beak of their offspring be?

**Learning Outcomes Covered**

- o SCI.3.2.01.008

a.

Long in 100% of the offspring

b.

Short in 100% of the offspring

c.

Long in 50% of the offspring

d.

Short in 75% of the offspring

**Q.5: Effects of using land for agriculture**

**Mark(s): 0/4**

Which describes a step people can take to help minimize the effects of using land for agriculture?

**Learning Outcomes Covered**

- SCI.2.1.01.012
- SCI.2.1.01.013

a.

Use more land for farms and feeding cattle

b.

Increase the number of different pesticides used

c.

Remove crops quickly to increase erosion of soil

d.

Increase recycling to resources such as metals



A farmer takes a cutting from a plant and grows a new plant from it.



What type of reproduction is this?

**Learning Outcomes Covered**

- SCI.3.2.01.008

a.

Sexual reproduction

b.

Asexual reproduction

c.

Pollination

d.

Gravitropism

Which statement best explains the difference between genotype and phenotype?

**Learning Outcomes Covered**

- SCI.3.2.01.008

a.

Genotype refers to the observable traits, while phenotype refers to the genetic makeup

b.

Genotype refers to the genetic makeup, while phenotype refers to the observable traits

c.

Genotype and phenotype are the same term and give the same meaning

d.

Genotype refers to environmental influences, while phenotype refers to genetic influences

Which describes a way that people can minimize their impact on air pollution?

**Learning Outcomes Covered**

- SCI.2.1.01.013
- SCI.4.4.01.035

a.

Decrease burning of oil and coal

b.

Invent ways to remove particulate matter from the air

c.

Decrease the size of the ozone layer

d.

Invent ways to treat asthma

Consider a species that can reproduce both sexually and asexually.  
Under what environmental conditions might this species prefer sexual reproduction over asexual reproduction?

**Learning Outcomes Covered**

- o SCI.3.2.01.008

a. In a stable environment where conditions do not change

b. In a rapidly changing environment where genetic diversity is beneficial

c. In an environment with limited resources and space

d. In an environment with abundant resources and space

Which correctly describes something that can have both a positive and negative impact on the environment?

**Learning Outcomes Covered**

- SCI.2.1.01.013
- SCI.4.4.01.035

a.

Building a dam

b.

Picking up litter

c.

Decreasing the use of chemical fertilizers

d.

Using less water at home

Which of the following is **NOT** an environmental factor that would affect the hamster's growth in the figure below?



Learning Outcomes Covered

- o SCI.3.2.01.008

a.

The amount of food the hamster is given

b.

Gene for fur color as brown or white

c.

The amount of time spent on the exercise wheel

d.

Interactions with other hamsters

## How do alleles relate to genes?

### Learning Outcomes Covered

- SCI.3.2.01.008

a.

Alleles are the physical structures that house genes

b.

Alleles are different forms of the same gene

c.

Alleles are completely unrelated to genes

d.

Alleles are the same as chromosomes

Which describes the effect of recycling?

Learning Outcomes Covered

- SCI.2.1.01.013
- SCI.4.4.01.035

a.

Recycling increases land usage

b.

Recycling decreases land usage

c.

Recycling increases pollution

d.

Recycling stops land from being used



## What is groundwater?

### Learning Outcomes Covered

- SCI.2.1.03.005
- SCI.2.1.03.006
- SCI.4.4.01.035

a.

Water that evaporates from the ocean

b.

Water that flows in rivers and streams

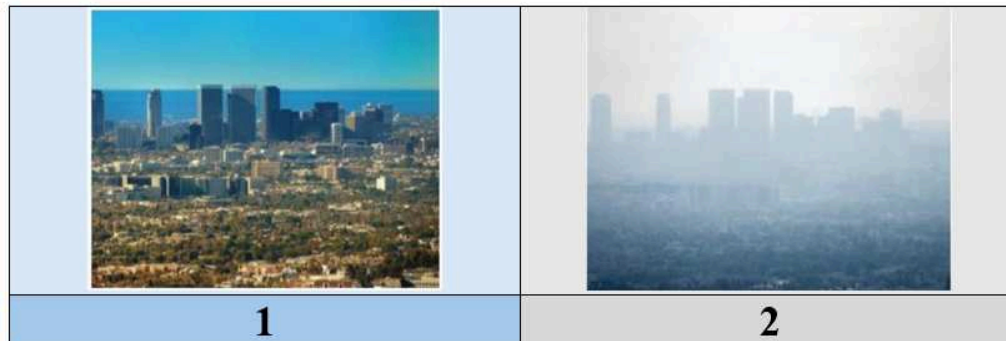
c.

Water located beneath the Earth's surface

d.

Water found in lakes and ponds

What affected the city in Figure 2?



**Learning Outcomes Covered**

- SCI.2.1.01.013
- SCI.2.1.03.007
- SCI.2.1.03.008
- SCI.4.4.01.035

a.

Photochemical smog

b.

Chlorofluorocarbons (CFCs)

c.

Particulate matter

d.

Acid Precipitation

