

تم تحميل هذا الملف من موقع المناهج الإماراتية



موقع
المناهج الإماراتية

www.alManahj.com/ae

*للحصول على أوراق عمل لجميع الصفوف وجميع المواد اضغط هنا

<https://almanahj.com/ae>

* للحصول على أوراق عمل لجميع مواد الصف السادس اضغط هنا

<https://almanahj.com/ae/6>

* للحصول على جميع أوراق الصف السادس في مادة تصميم ولجميع الفصول, اضغط هنا

<https://almanahj.com/ae/6design>

* للحصول على أوراق عمل لجميع مواد الصف السادس في مادة تصميم الخاصة بـ الفصل الثاني اضغط هنا

<https://almanahj.com/ae/6design2>

* لتحميل كتب جميع المواد في جميع الفصول للـ الصف السادس اضغط هنا

<https://almanahj.com/ae/grade6>

للحصول على جميع روابط الصفوف على تلغرام وفيسبوك من قنوات وصفحات: اضغط هنا

https://t.me/UAElinks_bot



| STUDENT SECTION | | | | |
|--------------------------|--|-------------------|-------|-------------------|
| Name | | | Class | |
| Student MOE number (SIS) | | School MOE Number | | STUDENT SIGNATURE |
| School name | | | | |

Design Technology

Grade 6

Term 2 Sample Examination


Date: February 2018

Time: TBC

Duration: 30 minutes

STUDENT INSTRUCTIONS –
Students must attempt **all** questions.
For this examination, you must have:
1. A blue ink pen.
2. A pencil.

TEACHER NOTES & INSTRUCTIONS

Please tick  the correct answers in **RED INK** and then write the mark awarded in the marking columns. With multiple mark answers highlight where the mark is awarded by **underlining** or by using an extra tick.

| FOR ADMIN ONLY | |
|---------------------|----------------|
| MARKING RECORD | |
| Section | Section TOTALS |
| Section 1 | |
| Section 2 | |
| Section 3 | |
| Section 4 | |
| MARKER SIGNATURE | TOTAL MARKS |
| | |
| MODERATOR SIGNATURE | |
| | |

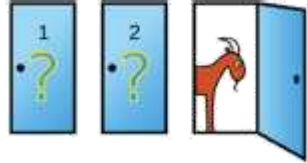
SECTION 1 – Match the Diagram to the Key Word

Match the word to the picture. Write the matching letter in the correct box. The first one has been done for you. (1 mark each)

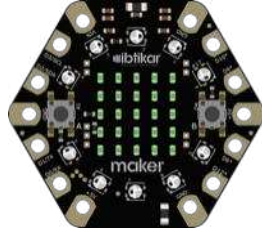
Key Words

Diagrams


| | |
|---|-----------------|
| <p>Example Conditional Statement</p> | <p>F</p> |
|---|-----------------|

| | |
|------------------|---|
| <p>F.</p> |  |
|------------------|---|


| | |
|-----------------------|--|
| <p>1. Logic Block</p> | |
|-----------------------|--|

| | |
|------------------|---|
| <p>A.</p> |  |
|------------------|---|

| | |
|-----------------|--|
| <p>2. Input</p> | |
|-----------------|--|

| | |
|------------------|---|
| <p>B.</p> |  |
|------------------|---|

| | |
|-----------------|--|
| <p>3. Maker</p> | |
|-----------------|--|

| | |
|------------------|---|
| <p>C.</p> |  |
|------------------|---|

| | |
|--------------------|--|
| <p>4. Variable</p> | |
|--------------------|--|

| | |
|------------------|--|
| <p>D.</p> |  |
|------------------|--|

/ 4

SECTION 2 – Multiple Choice Questions

Choose and circle the correct answer – A, B or C.

(1 mark each)

Example: A collection of instructions to complete a specific task is called:

- A. a program
- B. an application
- C. an event

1. _____ is when a code repeats itself.
 - A. Pseudocode
 - B. Input
 - C. Iteration
2. RAM stands for: _____.
 - A. Random Access Memory
 - B. Read Only Memory
 - C. Read And write Memory
3. What is a variable?
 - A. The different options available in a software
 - B. A program written in plain English
 - C. An empty location in the memory
4. What does a logic block do?
 - A. Store data
 - B. Create variables
 - C. Make decisions

/ 4

SECTION 3 – True or False

Choose and circle the correct answer TRUE or FALSE.

(1 mark each)

Example:

If statement gives two possible choices

TRUE FALSE

1. Maker can only hold one program at a time.
2. Memory is where computers process things.
3. LED stands for Liquid Crystal Display.
4. Computers store information in temporary locations called variables.

TRUE FALSE

TRUE FALSE

TRUE FALSE

TRUE FALSE

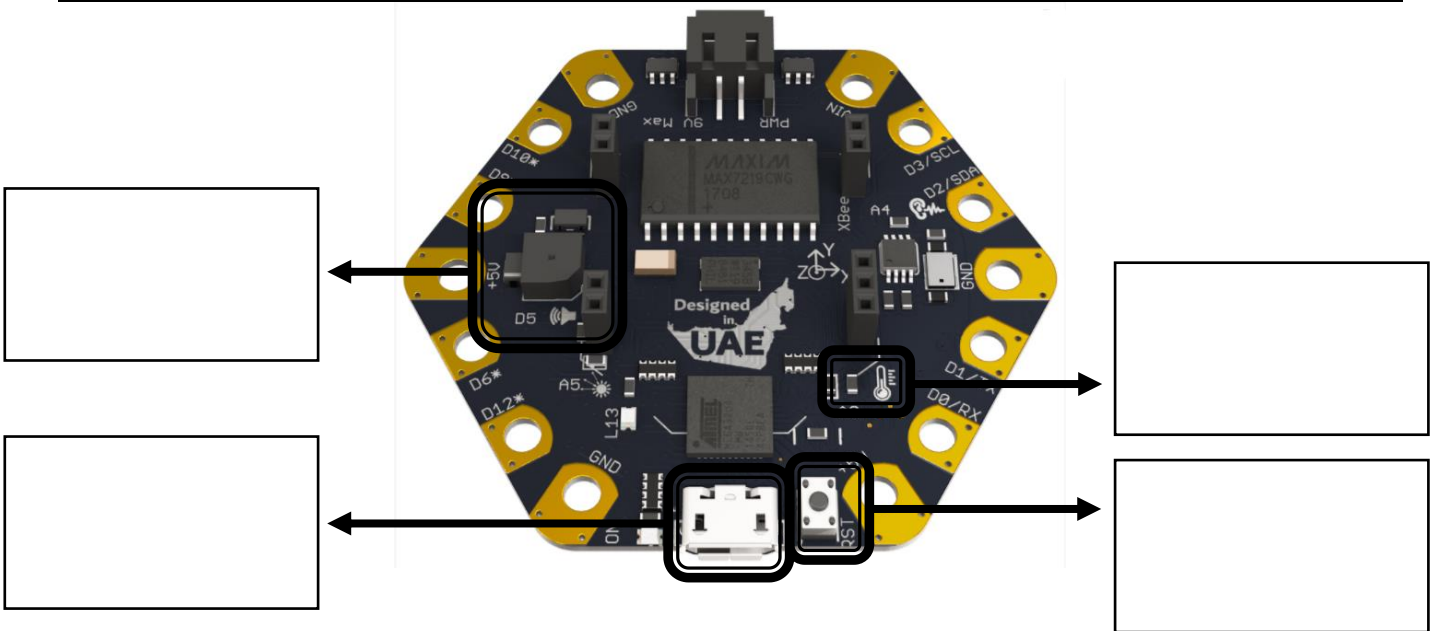
/ 4

SECTION 4 – Label the Diagram

Label the diagram with labels from the word bank below.

(2 marks each)

| | | | | |
|-------------------------|---------------------------|---------------|---------------------|------------|
| Micro-USB Socket | Temperature Sensor | Buzzer | Reset Button | LED |
|-------------------------|---------------------------|---------------|---------------------|------------|



/ 8

TOTAL

/ 20

You have now finished the examination.



Design Technology
Grade 6 Sample - Term 2 - Answer Key

Where student responses may vary please use your professional judgment. Be reasonable and award marks **ONLY** when deserved for answers given.

Marks will be awarded as indicated on the examination paper. Specific mark breakdowns for questions will be written when necessary.

| Section 1 - Matching | |
|----------------------|--------|
| Question | Answer |
| 1 | C |
| 2 | D |
| 3 | A |
| 4 | B |

| Section 2 – Multiple Choice | |
|-----------------------------|--------|
| Question | Answer |
| 1 | C |
| 2 | A |
| 3 | C |
| 4 | C |

| Section 3 – True or False | |
|---------------------------|--|
| 1 mark each | <ol style="list-style-type: none"> 1. True 2. False 3. False 4. True |

Section 4 – Label the diagram below (2 marks per correct label)

