

تم تحميل هذا الملف من موقع المناهج الإماراتية



## حل أسئلة الامتحان النهائي التعويضي

موقع المناهج ← المناهج الإماراتية ← الصف التاسع العام ← علوم ← الفصل الأول ← حلول ← الملف

تاريخ إضافة الملف على موقع المناهج: 09:52:01 2024-11-13

ملفات اكتب للمعلم اكتب للطالب الاختبارات الكترونية | اختبارات | حلول | عروض بوربوينت | أوراق عمل  
منهج انجليزي | ملخصات وتقارير | مذكرات وبنوك | الامتحان النهائي للمدرس

المزيد من مادة  
علوم:

## التواصل الاجتماعي بحسب الصف التاسع العام



صفحة المناهج  
الإماراتية على  
فيسبوك

الرياضيات

اللغة الانجليزية

اللغة العربية

التربية الاسلامية

المواد على تلغرام

## المزيد من الملفات بحسب الصف التاسع العام والمادة علوم في الفصل الأول

تجميعه أسئلة القسم الكتابي وفق الهيكل الوزاري منهج انسباير

1

تجميعه أسئلة القسم الالكتروني وفق الهيكل الوزاري منهج انسباير

2

تجميعه صفحات الكتاب وفق الهيكل الوزاري منهج بريدج

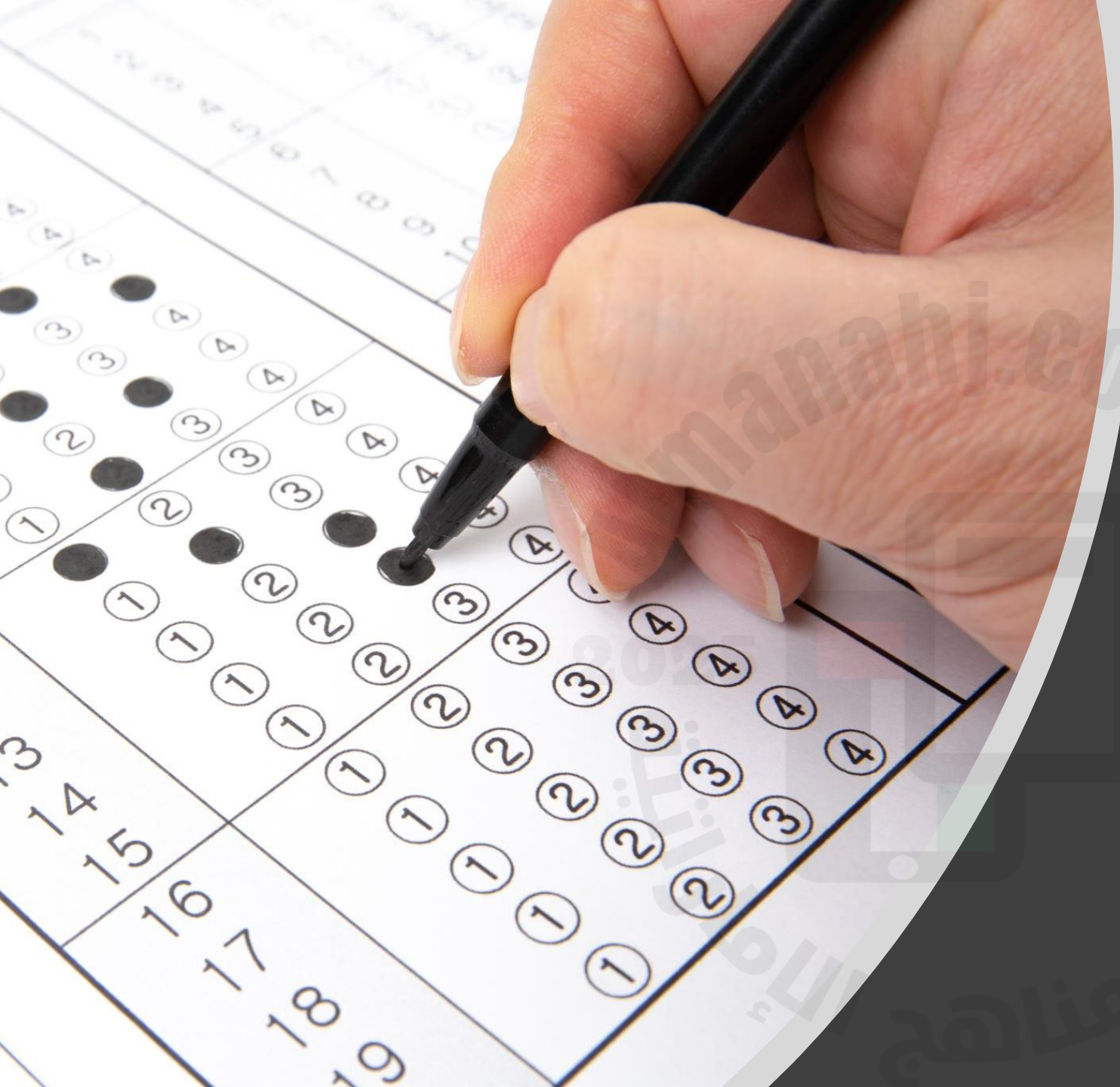
3

ملخص بدون أمثلة وفق الهيكل الوزاري منهج انسباير

4

الهيكل الوزاري الجديد المسار العام منهج بريدج

5



# EOT 1 EXAM MAKE UP science

GRADE 9G

2022-2023

Which of the following is one of the uses for bromine compounds?

a.

Disinfect water in swimming pools



b.

Used to study genetic material, such as DNA



c.

Necessary to produce thyroxin hormone



d.

Medical research due to their radioactive properties



Which of the following is correct for the element Z, shown in the figure below?

Mass number 63

Atomic number 29

Z

a.

A

b.

B

c.

C

d.

D



Silver and gold are used in jewelry.

Which of the following is **NOT** a reason why silver and gold are used in jewelry?

a.

High abundance on earth's crust



b.

Relative softness



c.

Attractive colors

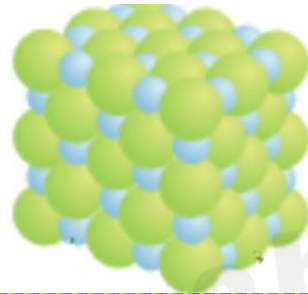


d.

Resistance to corrosion



In the figure below, what is a crystal of table salt made up from?



a.

Bonding between metal with nonmetal



b.

Bonding between metal with metal



c.

Bonding between nonmetal with nonmetal



d.

Bonding between nonmetal with metalloid



What property is described by the measurement 298 K?

a.

Mass



b.

Temperature



c.

Time

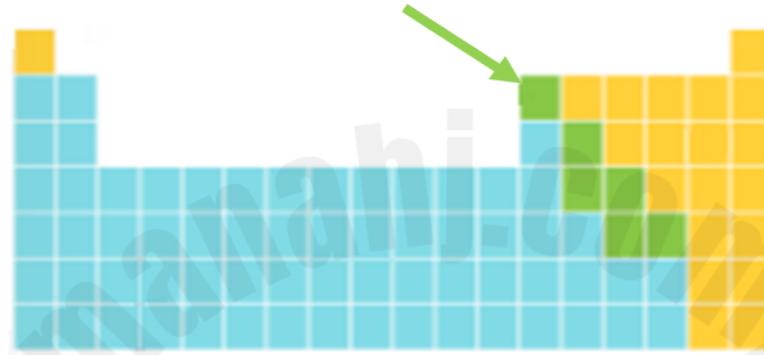


d.

Length



What is the name of the elements shaded in green stair step line in the following periodic table of elements?



a.

Metalloids



b.

Metals



c.

Nonmetals



d.

Undiscovered elements





**Bromine has two isotopes:**

one isotope has an atomic mass of  $78.92 \text{ amu}$  and a relative abundance of  $50.69\%$ .

The other major isotope of bromine has an atomic mass of  $80.92 \text{ amu}$  and a relative abundance of  $49.31\%$

**What is the average atomic mass of bromine?**

a.

$79.91 \text{ amu}$



b.

$80.23 \text{ amu}$



c.

$79.52 \text{ amu}$



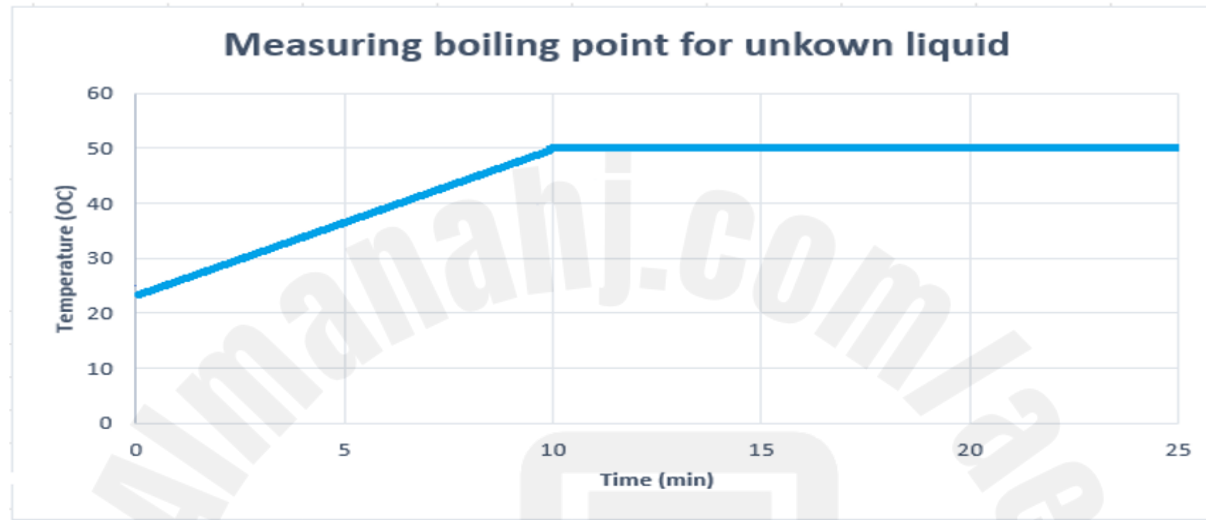
d.

$79.77 \text{ amu}$



To determine the boiling point of an unknown liquid, a student heats 10 mL of the liquid in a test tube and records the temperature every minute for 25 minutes. He plots the relation in the following graph.

What does the time on the x-axis represents?



a.

The dependent variable



b.

The independent variable



c.

The control



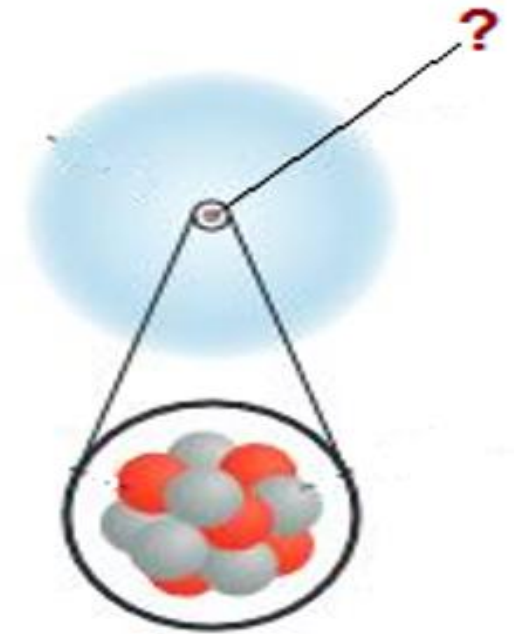
d.

The constant

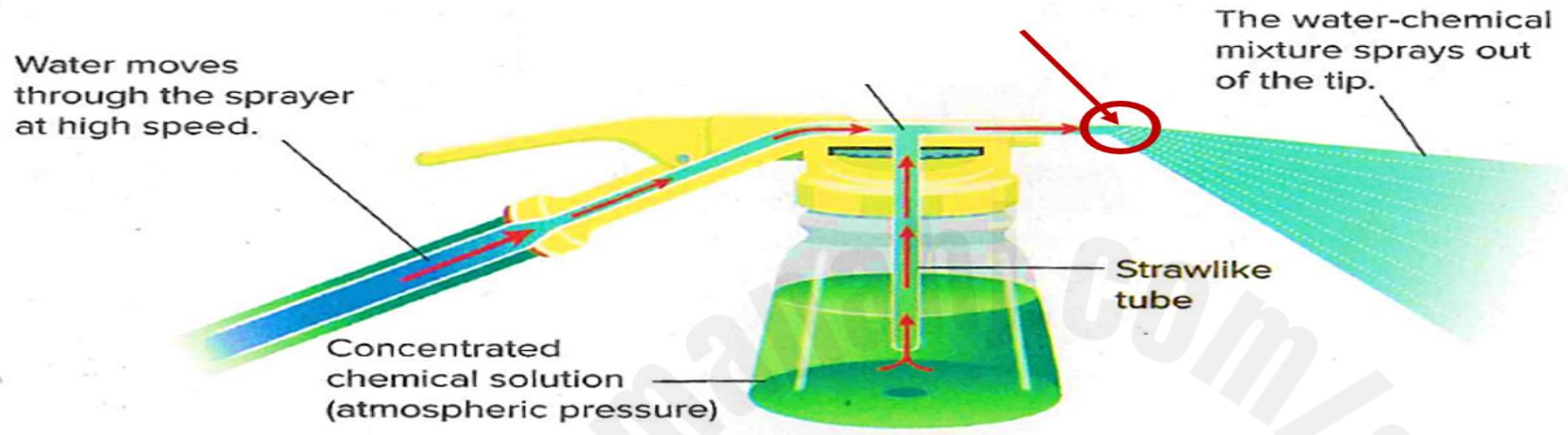


What is the assigned part on the atom shown below?

- a.  Nucleus
- b.  Proton
- c.  Electron
- d.  Neutron



Water is flowing through a horizontal pipe of a non-uniform cross-section (wide at the beginning and narrow at the end). What will the pressure and the velocity for the water be at the extreme narrow portion of the pipe?



- a.  Maximum pressure and least velocity
- b.  Least pressure and maximum velocity
- c.  Both pressure and velocity maximum
- d.  Both pressure and velocity least

According to Pascal's principle, what happens to the pressure applied to a fluid?

a.

Decreases as it moves through the fluid



b.

Transmitted unchanged throughout the fluid



c.

Increases by a factor of 5 as it moves through the fluid



d.

Doubles as it is transmitted throughout the fluid



If 55.0 g of sodium reacts with chlorine gas to form 122.0 g of sodium chloride, how many grams of chlorine gas reacted?



a.

55.0 g



b.

46.0 g



c.

67.0 g



d.

177.0 g

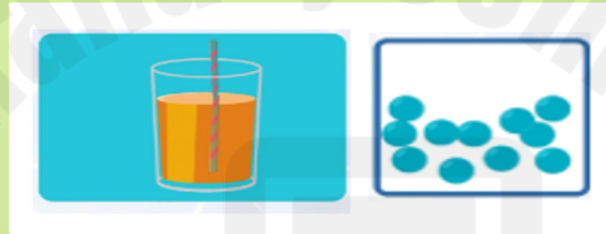


Which of the following figures represents the **liquid state**?

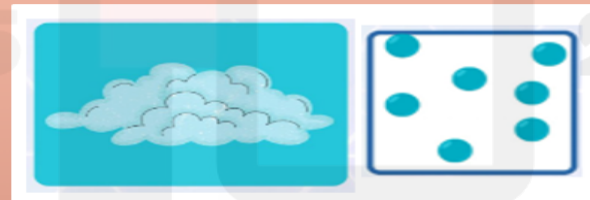
a.



b.



c.



d.



Which of the following statements is **correct**?

a.

Mendeleev arranged the elements according to increasing atomic number

b.

Mendeleev solved the problem of fluctuating of mass

c.

Moseley arranged the elements according to increasing atomic mass

d.

Moseley arranged the elements according to increasing atomic number



What is the **similarity** between the elements of the group **17** and the group **18** in the periodic table?



a.

They are nonmetals and most of their elements are in the gaseous state



b.

They are very reactive in their elemental forms



c.

They have a filled outermost energy level



d.

They will glow if an electric current passes through them



Ordinarily, substances contract as their temperatures decreases. However, an exception to this rule is water. Which of the following statement is the correct reason for the water's strange behavior when it freeze?

1	The positively and negatively charged ends of the water molecules interact
2	Empty space in the crystal lattice is created
3	Density increase for the water as it change to ice

- a. 3 only
- b. 2 only
- c. 1 and 3
- d. 1 and 2

Which atomic model is represented by the idea that all the positive charge of an atom is concentrated in a central atomic nucleus that is surrounded by electrons, shown in the figure below?



a.

Rutherford Model



b.

Democritus Model



c.

Thomson Model



d.

Bohr Model



Which of the following is an example of a heterogenous mixture?

a.

Blood



b.

Lemonade



c.

Gasoline



d.

Steel



In the diagram below, what could glass number **1** contain?



a.

Water



b.

Milk



c.

Muddy water



d.

Mayonnaise



The following figure shows an unknown metal material with a mass equal to 12.6 g and a volume 4.70 cm<sup>3</sup>, using the table below, what is the metal?



Mass = 12.6 g

Volume = 4.70 cm<sup>3</sup>

Metal name	Density
Iron	7.87 g/cm <sup>3</sup>
Aluminum	2.70 g/cm <sup>3</sup>
Potassium	0.862 g/cm <sup>3</sup>
Silver	10.49 g/cm <sup>3</sup>

a.

Iron



b.

Aluminum



c.

Potassium



d.

Silver



A 2.50 L balloon at room temperature ( $20.0^{\circ}\text{C}$ ) is placed in a refrigerator at  $5.0^{\circ}\text{C}$ . What is the volume of the balloon after it cools in the refrigerator?

a.

1.9 L



b.

2.6 L



c.

1.1 L



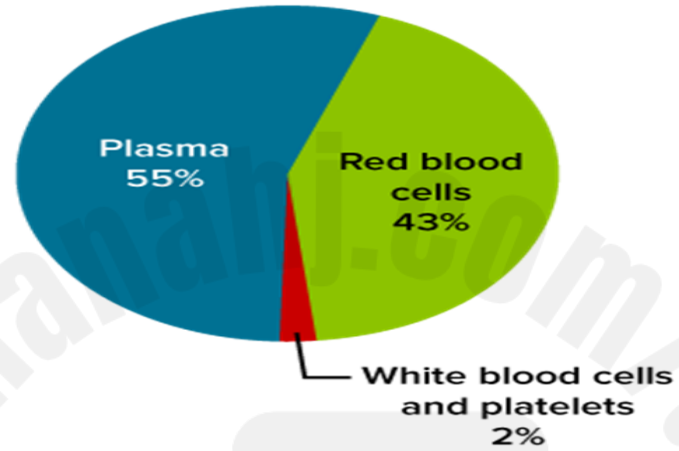
d.

2.4 L



A student made a circle graph showing the percentages of the substances that make up human blood. What is the ratio between plasma and cells (red blood cells, white blood cells and platelets)?

**Substances Making Up Human Blood**



a.

55 : 45



b.

55 : 43



c.

55 : 2



d.

55 : 41





Researchers conduct the scientific investigations in a blind experiment procedure, why?



a.

To increase the safety procedures for the investigator or the subject



b.

To increase the bias toward a specific item being tested



c.

To reduce the consumption of study samples



d.

To reduce the bias toward a specific item being tested



Which of the following examples is a physical change?

a.

Burning a tree branch (burning wood)



b.

Precipitate is produced when mixing lead (II) nitrate with potassium iodide



c.

Leaves changing colors in the fall



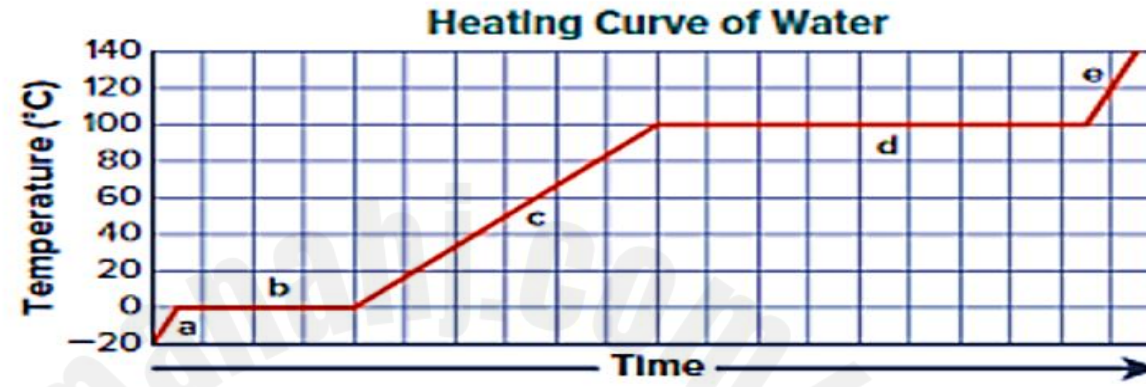
d.

Heating iron raises its temperature and changes its color



In the heating curve of water below, thermal energy is added at a constant rate.

Which intervals indicate that the added energy is used to overcome the attractions between the particles?



a.

**a & b** only



b.

**a, c, & e** only



c.

**b & d** only



d.

**c & d** only

